

# \$949,000 - 3243 Kenmare Crescent Sw, Calgary

MLS® #A2207824

## \$949,000

5 Bedroom, 2.00 Bathroom, 1,016 sqft  
Residential on 0.14 Acres

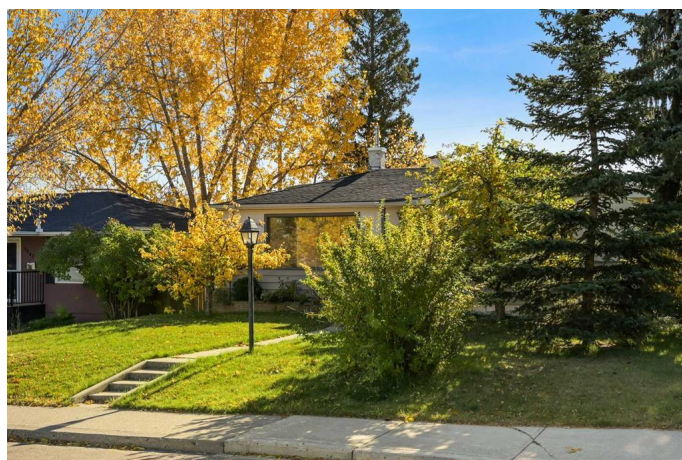
Killarney/Glengarry, Calgary, Alberta

Attention Builders & Developers! This is an amazing opportunity to secure a prime redevelopment property in the highly sought-after community of Killarney. Located on a rare cul-de-sac, this expansive 50' x 120' lot offers endless possibilities for new construction. With a desirable south-facing backyard, the property provides the perfect setting for a sun-filled home or multi-unit development. Surrounded by tree-lined streets and close to parks, schools, shopping, and transit, this location is ideal for future homeowners seeking both convenience and charm. This property is being sold for land value—don't miss your chance to capitalize on this exceptional investment opportunity!

Built in 1952

### Essential Information

MLS® #	A2207824
Price	\$949,000
Bedrooms	5
Bathrooms	2.00
Full Baths	2
Square Footage	1,016
Acres	0.14
Year Built	1952
Type	Residential
Sub-Type	Detached



Style	Bungalow
Status	Active

### Community Information

Address	3243 Kenmare Crescent Sw
Subdivision	Killarney/Glengarry
City	Calgary
County	Calgary
Province	Alberta
Postal Code	T3E 4R4

### Amenities

Parking Spaces	2
Parking	Double Garage Detached
# of Garages	2

### Interior

Interior Features	See Remarks
Appliances	None
Heating	Central
Cooling	None
Has Basement	Yes
Basement	Full, Partially Finished

### Exterior

Exterior Features	None
Lot Description	Back Lane, City Lot
Roof	Asphalt Shingle
Construction	Wood Frame
Foundation	Poured Concrete

### Additional Information

Date Listed	April 2nd, 2025
Days on Market	9
Zoning	DC

### Listing Details

Listing Office	MaxWell Capital Realty
----------------	------------------------

Data is supplied by Pillar 9â„¢ MLSÂ® System. Pillar 9â„¢ is the owner of the copyright in its MLSÂ® System. Data is deemed reliable but is not guaranteed accurate by Pillar 9â„¢. The trademarks MLSÂ®, Multiple Listing ServiceÂ® and

the associated logos are owned by The Canadian Real Estate Association (CREA) and identify the quality of services provided by real estate professionals who are members of CREA. Used under license.